



The NHS Long-Term Plan sets out great aspirations for primary care

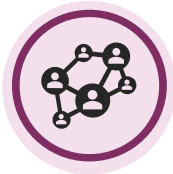
£4.5 billion a year by 2023/24 to:



Deliver more health services in local communities



Expand the number of services available in local GP practices




More healthcare staff working in and with GP practices



Deliver digital GP consultations



New community health teams to provide support to people in their own homes

 Source: NHS England

But **infrastructure** is a barrier to delivering modern and integrated services to the community

Only half of GPs

think that their premises are fit to meet present needs



42%


of the primary care estate is over 35 years old



80%

of practices are not suitable for future needs or anticipated population growth

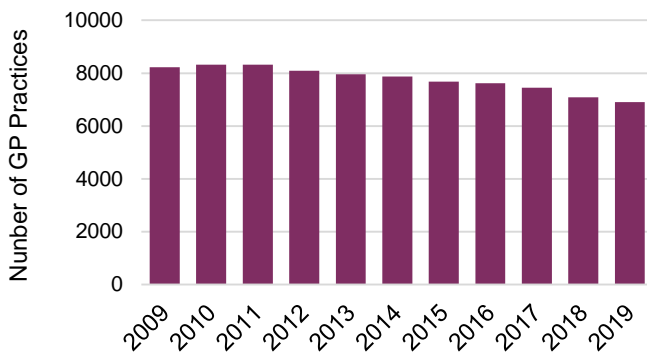


 Source: BMA, NHS England

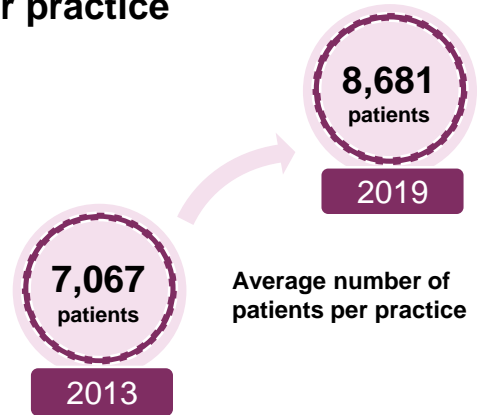
Recent years have seen a reconfiguration of the primary care estate, with practices **merging or closing**



The number of GP practices in England has dropped by more than **1,300 in the last decade**



There are now more patients per practice

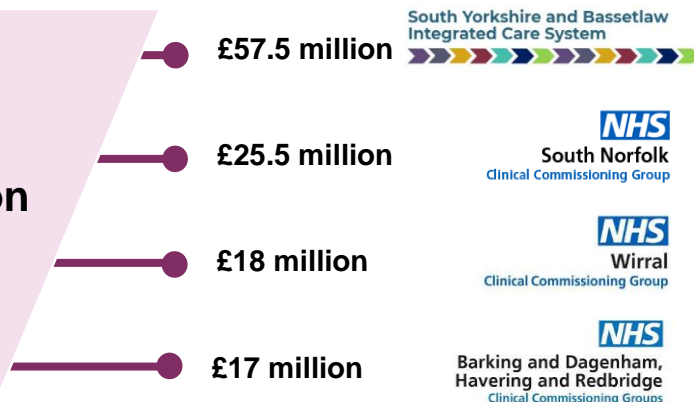


Source: NHS Digital

Investment in the estate is urgently needed, yet primary care continues to be ignored

£850 million
announced in the
2019 Spending
Round to upgrade
the estate

**Only
£110 million**
will go to
primary care



Source: GOV.UK



[A design diagnosis: reinvigorating the primary care estate.](#)

Reform's report on the primary care estate finds that private sector finance can upgrade the care estate at value for money for the taxpayer.

